



**Denton Corker Marshall**

architecture and urban design



# **DESIGN VOCABULARY**

**MELBOURNE UNIVERSITY**  
**24 JUNE 2009**

# FUNCTION FOLLOWS FORM

NEO CLASSICISM | BEAUX ART | FORMALISTIC AESTHETIC



**British Museum**  
Sir Robert Smirke  
London, UK 1823



**State Library of Victoria**  
Joseph Reed  
Melbourne, Victoria, Australia 1856

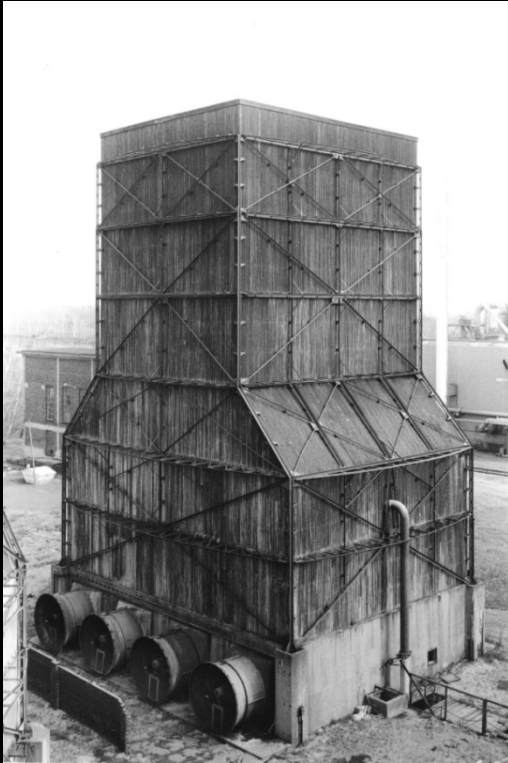


**U.S Supreme Court**  
Cass Gilbert  
Washington D.C, USA 1935

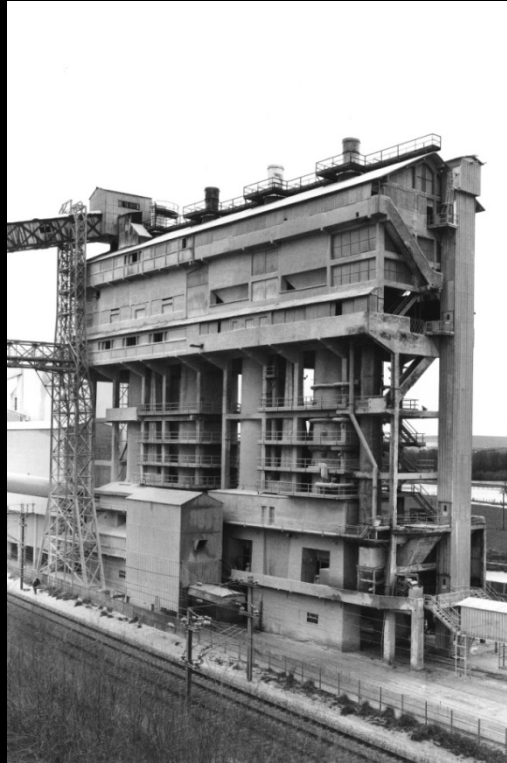


# FORM FOLLOWS FUNCTION

## INDUSTRIAL ARCHITECTURE



**Cooling Tower**  
Zeche Hansa, Dortmund-Huckarde, Germany



**Lime Kiln**  
Sorcy, France



**Blast Furnace**  
Aliquippa, Pennsylvania, USA

# FORM FOLLOWS FUNCTION

MODERNISM | BAUHAUS | FUNCTIONALIST AESTHETIC



**Crown Hall**  
**Mies van der Rohe**  
Illinois Institute of Technology, Chicago, Illinois,  
USA 1940



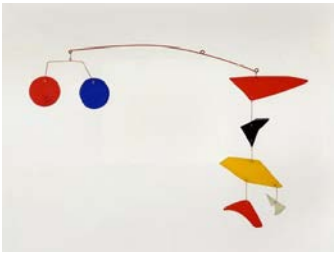
**Vihari Sabha**  
**Le Corbusier**  
Chandigarh, India 1952



**Finlandia Hall**  
**Alvar Aalto**  
Helsinki, Finland 1971

---

## **RECURRENT PREOCCUPATIONS IN OUR DESIGNS**



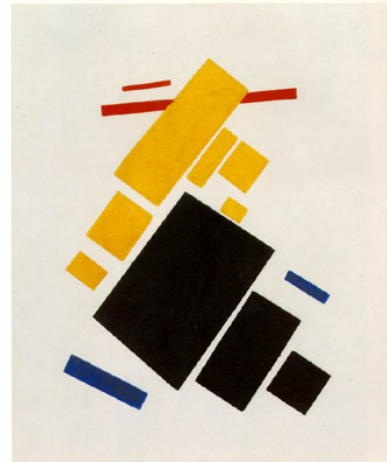
ALEXANDER CALDER



MARK ROTHKO



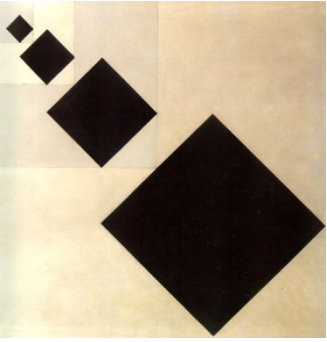
JASPER JOHNS



KASIMIR MALEVICH



RICHARD SERRA



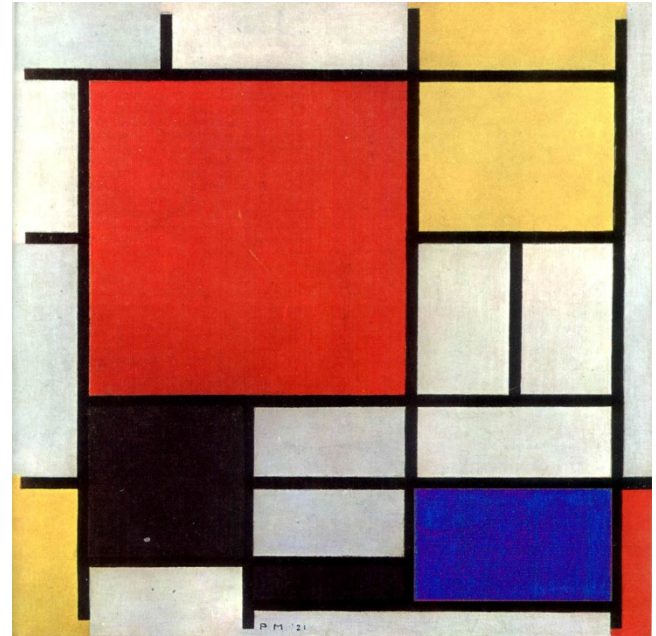
THEO VAN DOESBURG



DONALD JUDD



JOAN MIRO



PIET MONDRIAN

THE IDEA OF ARCHITECTURE AS ART | IN OUR CASE BASED UPON ABSTRACTION LEANING TO MINIMALISM









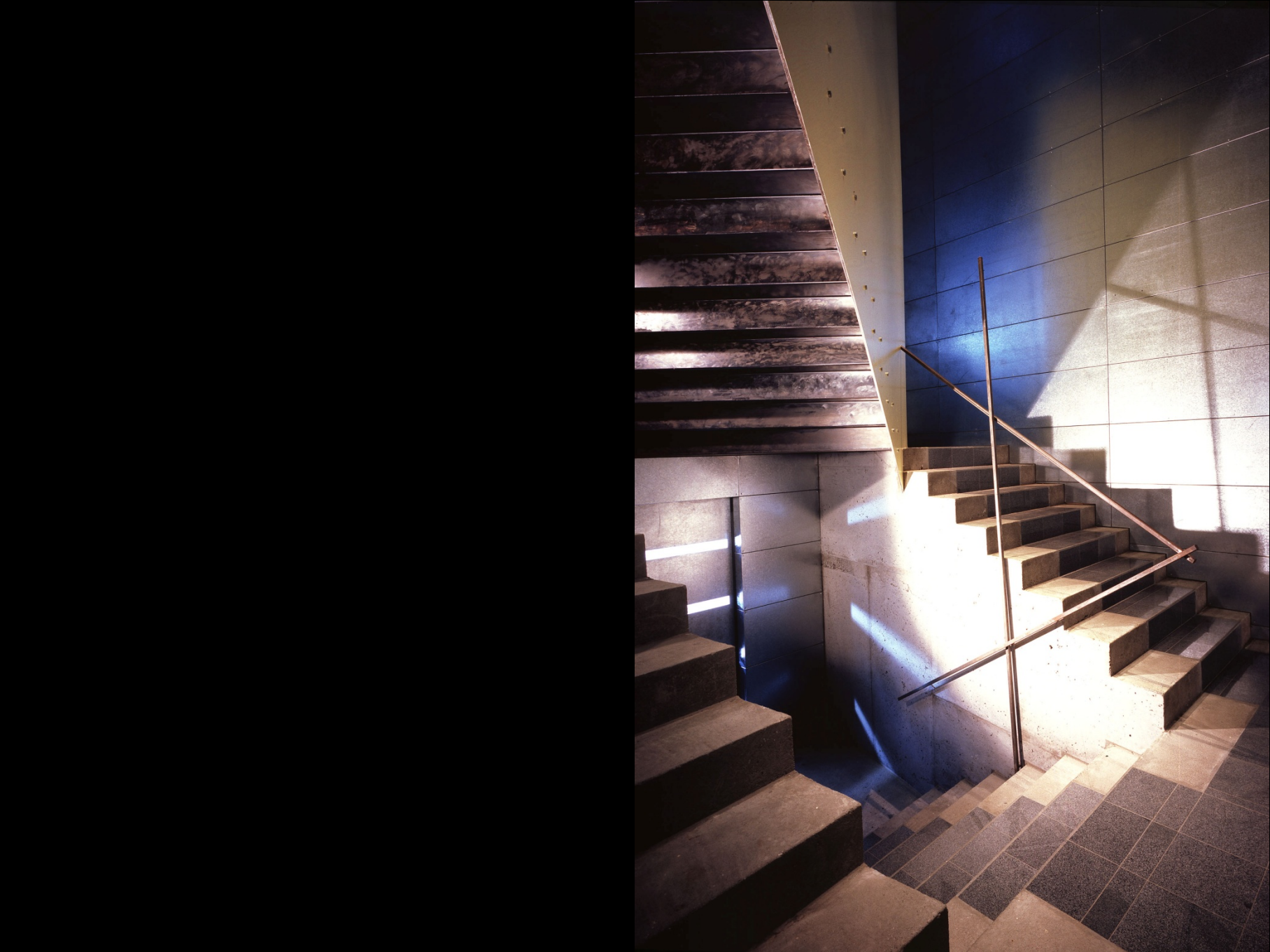
WE COMMONLY USE SCULPTURAL VIRGATE  
ELEMENTS SUCH AS STICKS...















EMBRACING SCALE



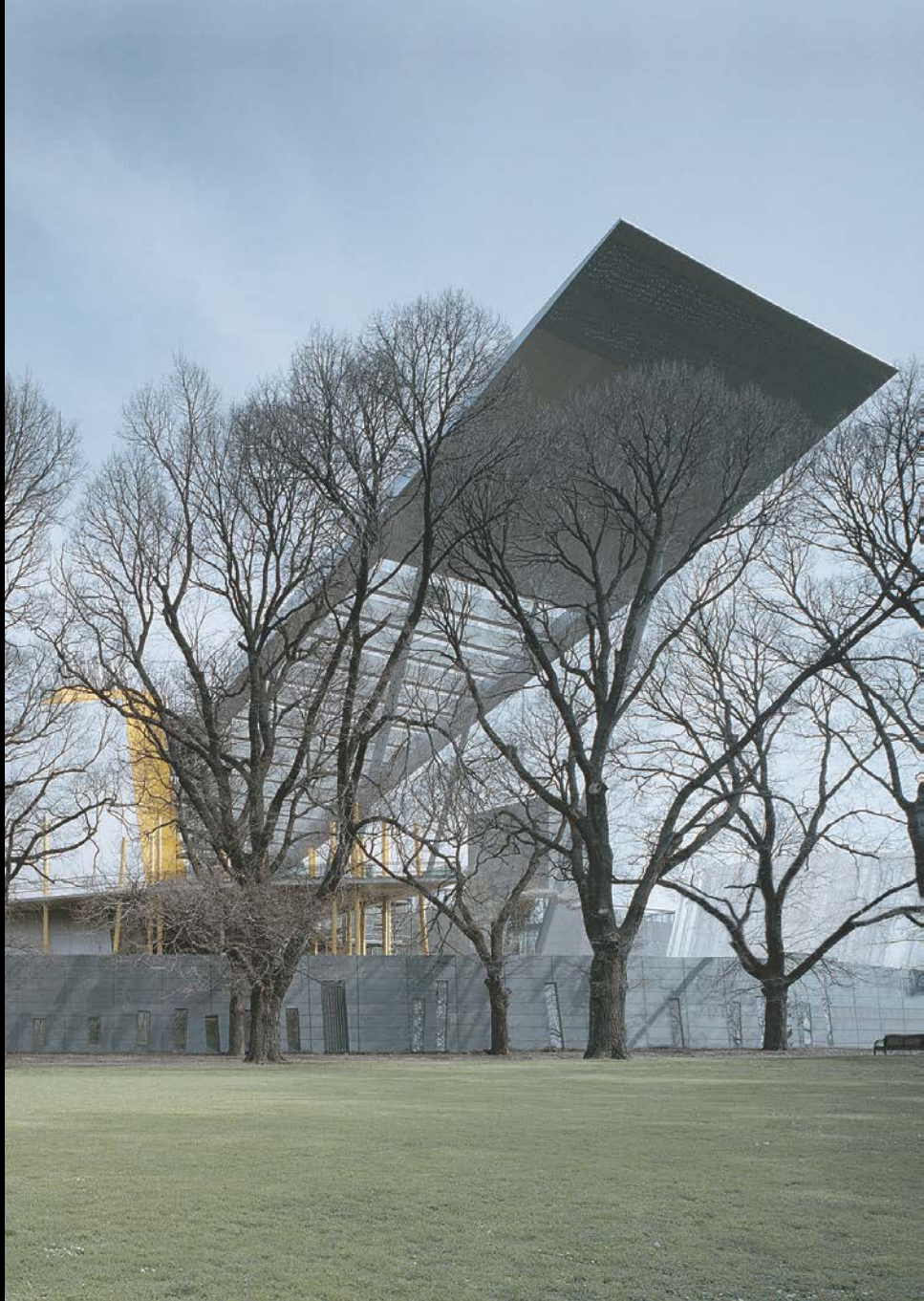
DESCALING

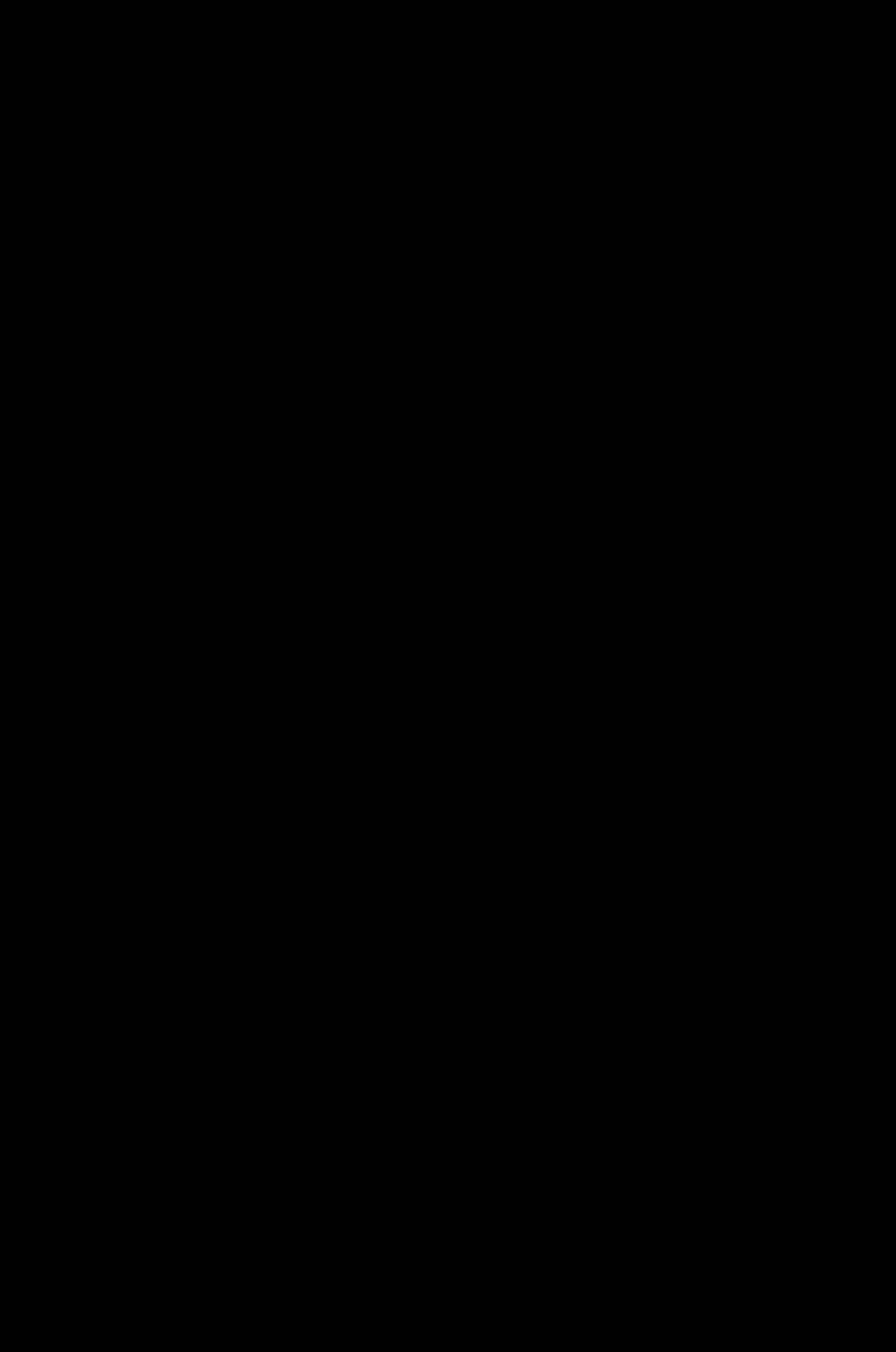


...BLADES...















...TUBES...











...PLATES...





















...GRIDS...







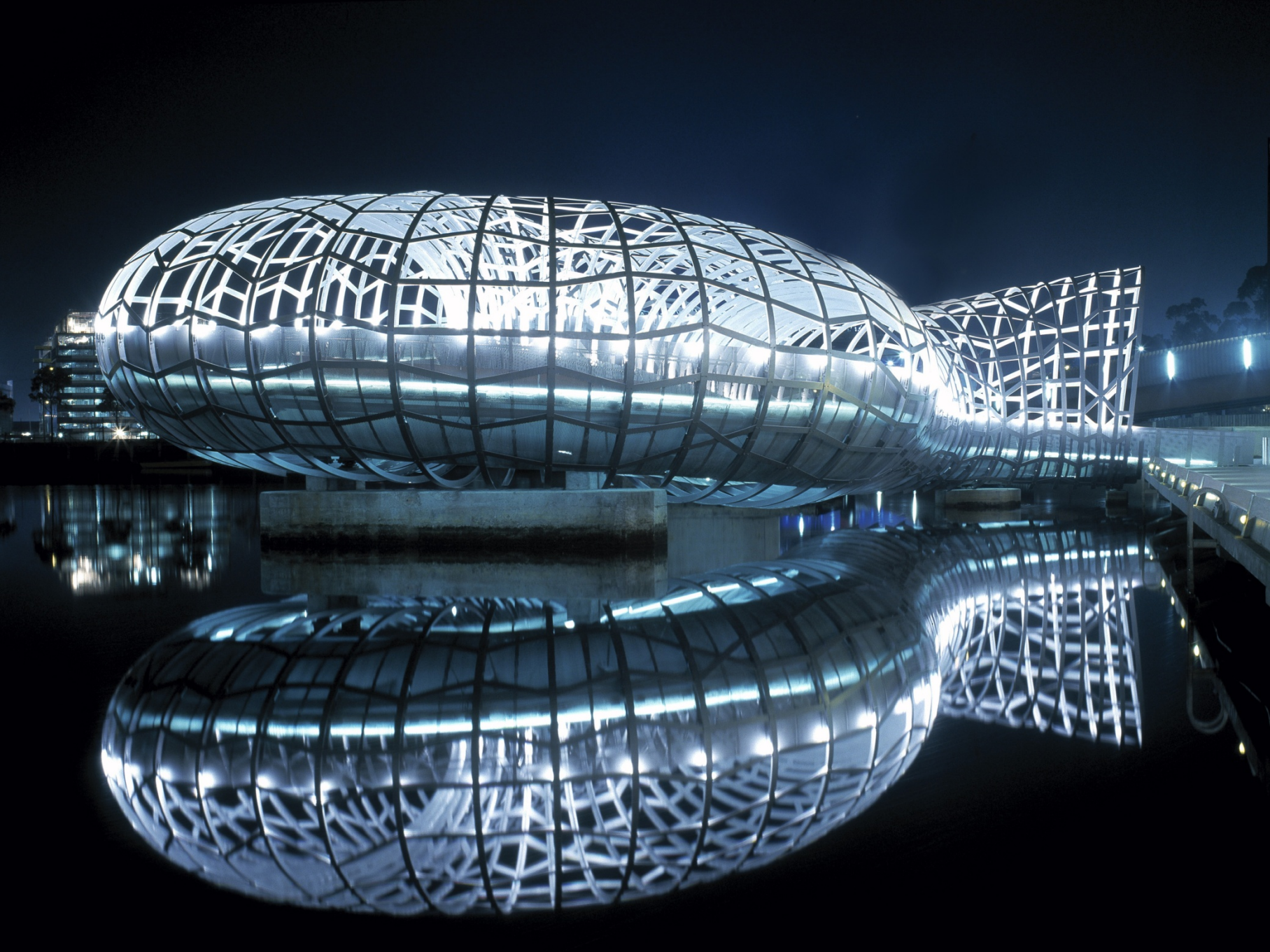
...WEBS...





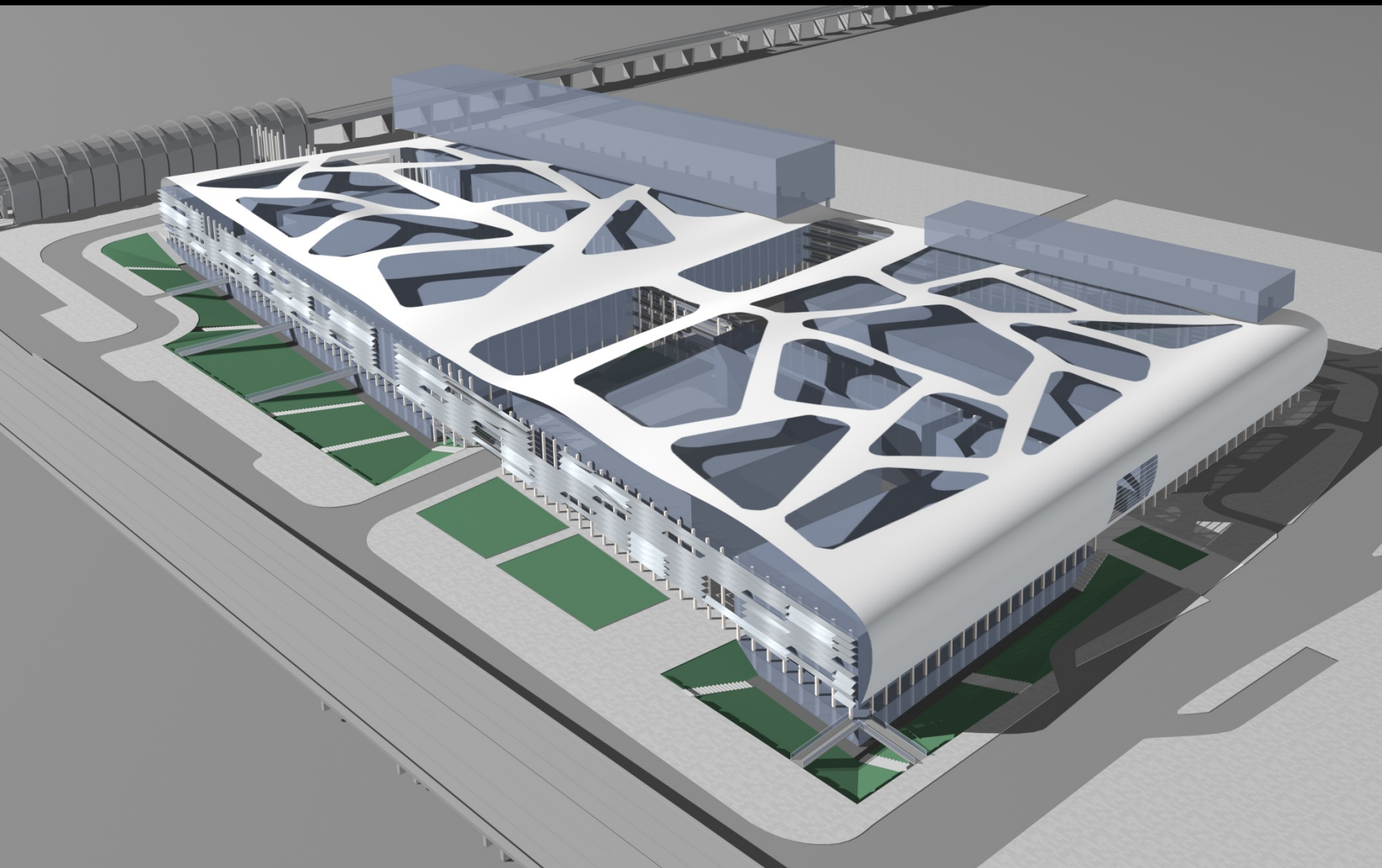
















WE CONCEIVE WHOLE BUILDINGS IN  
ELEMENTAL FORMS STACKED SUPRA  
SCALE UPON ONE ANOTHER  
...AS CUBES...









...BOXES...







...SHAFTS...



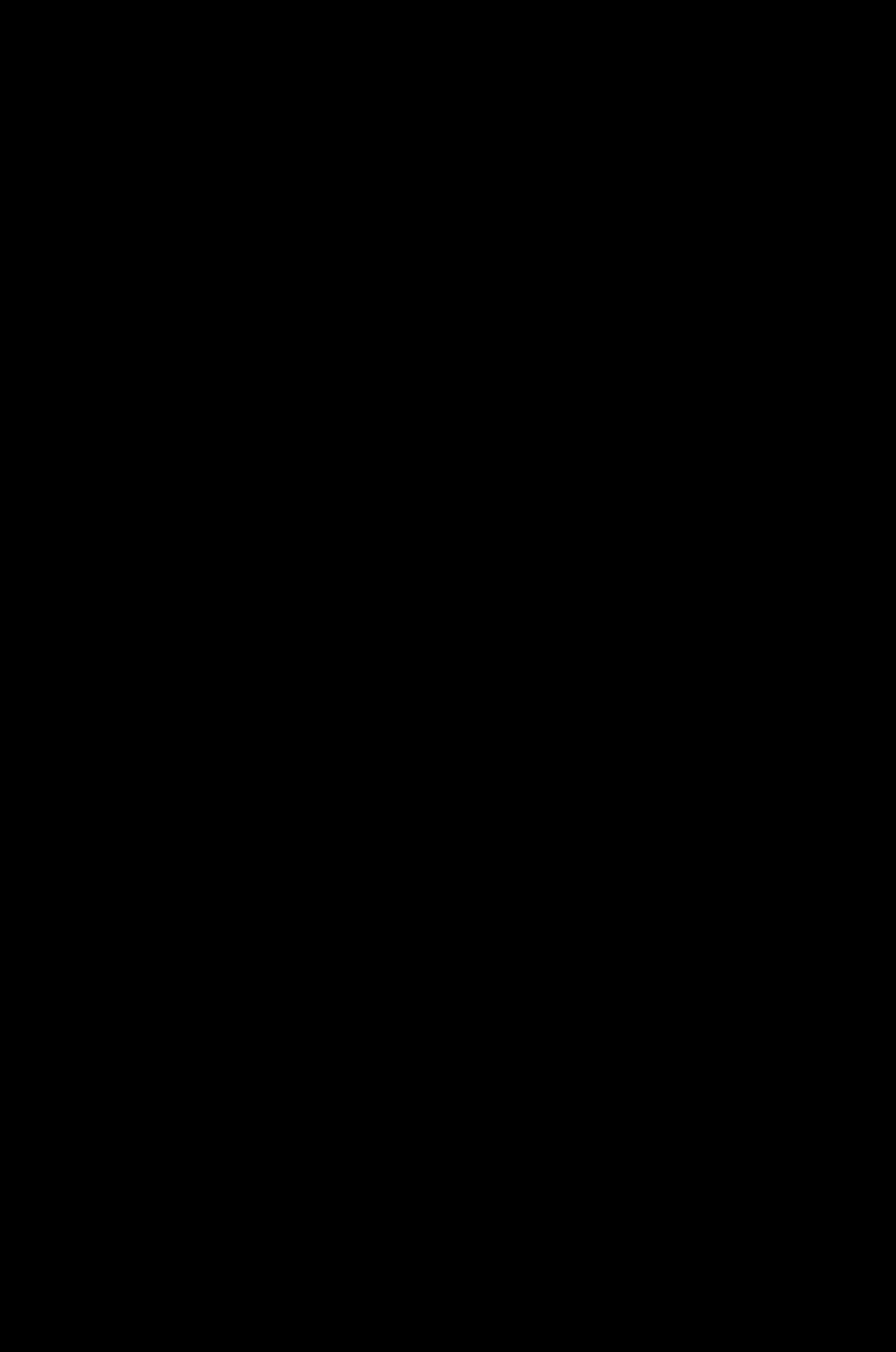










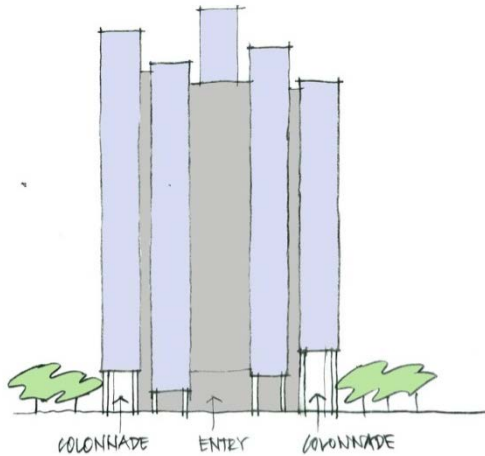
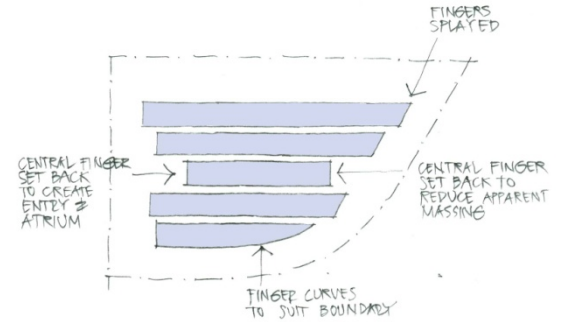
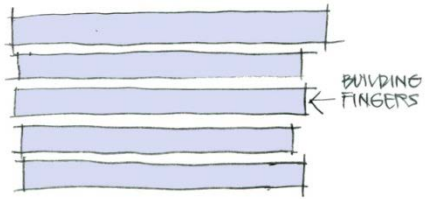
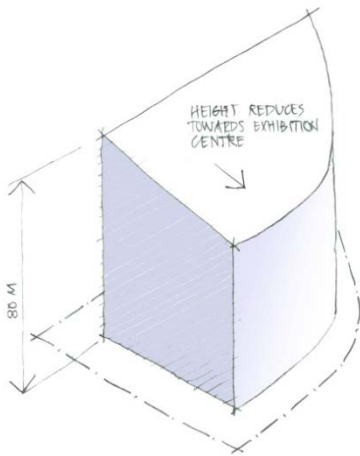


...FINGERS...

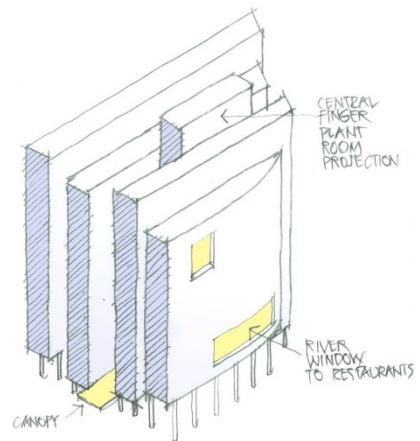








FINGERS EXPRESSED AS METAL 'BILLETS'

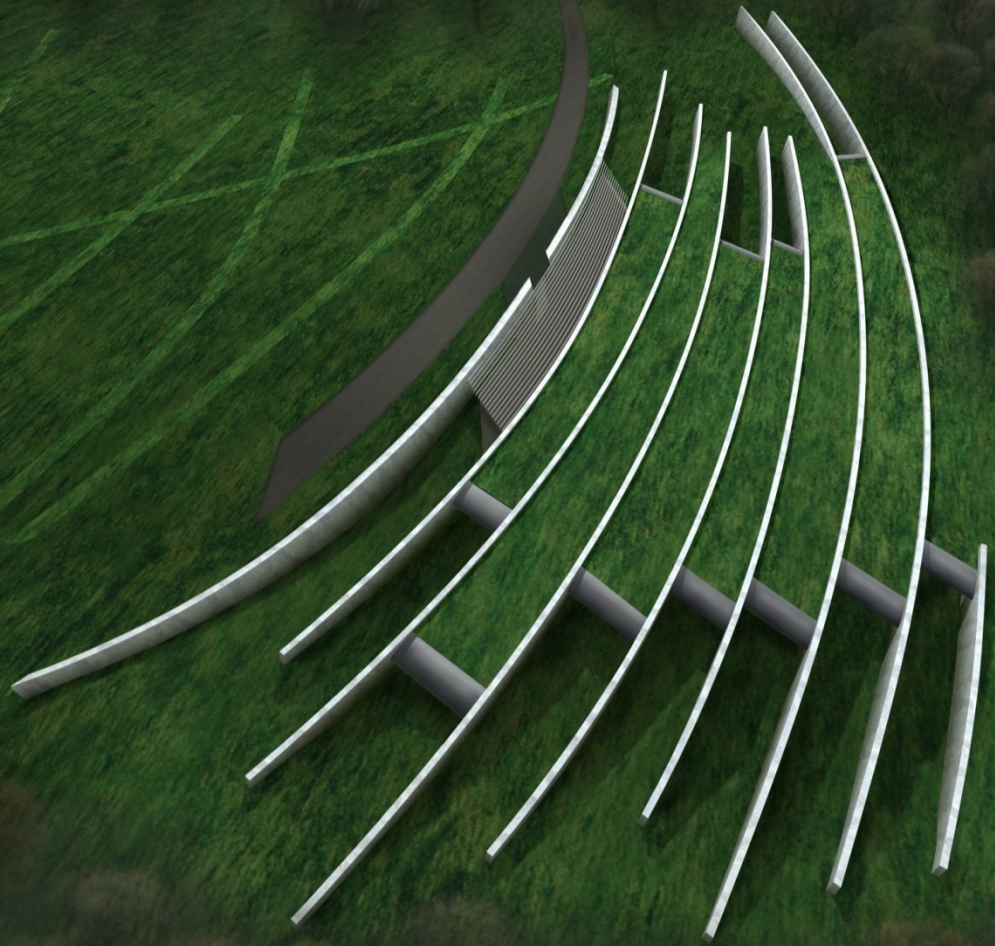




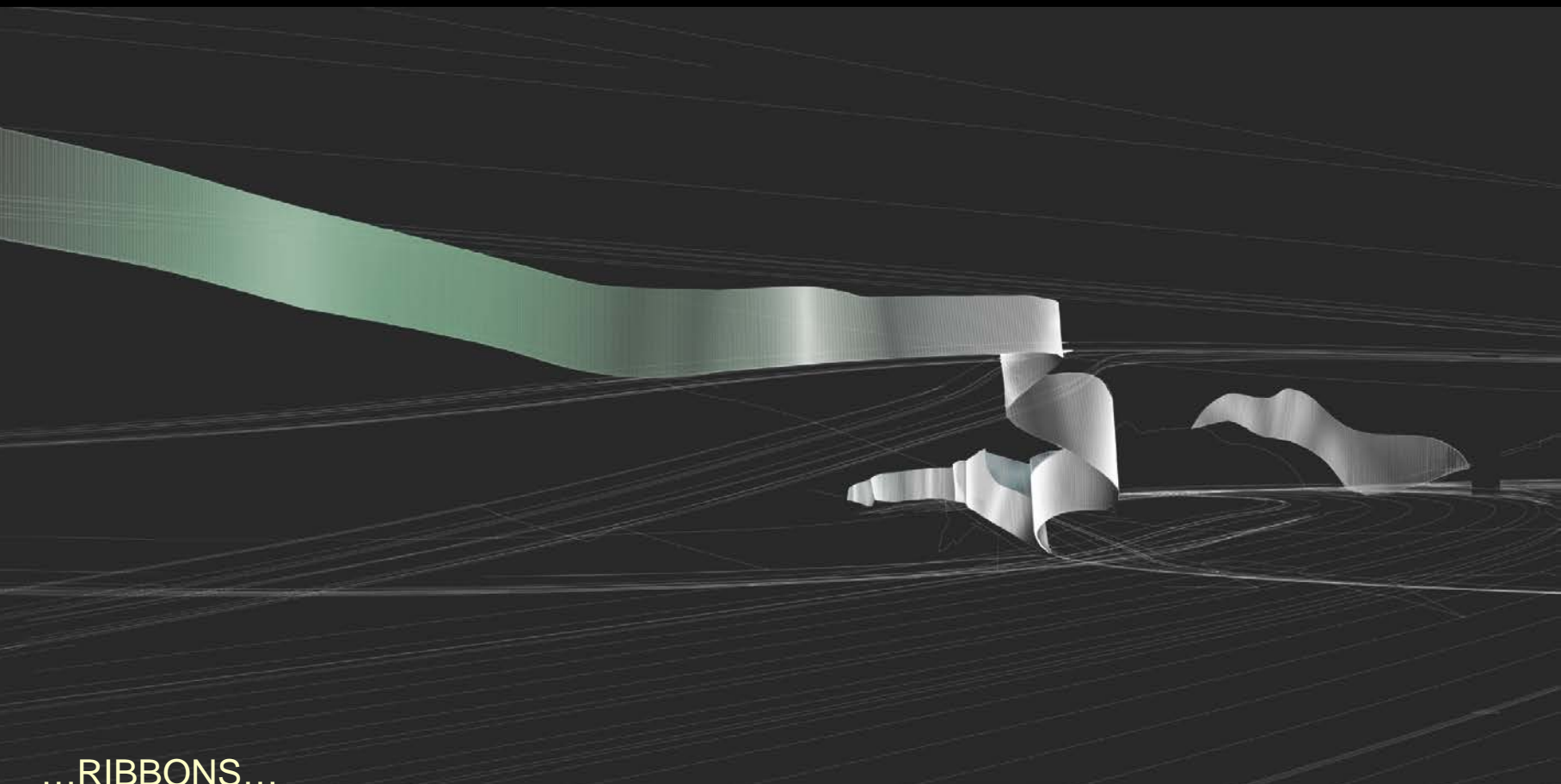




...LINES...





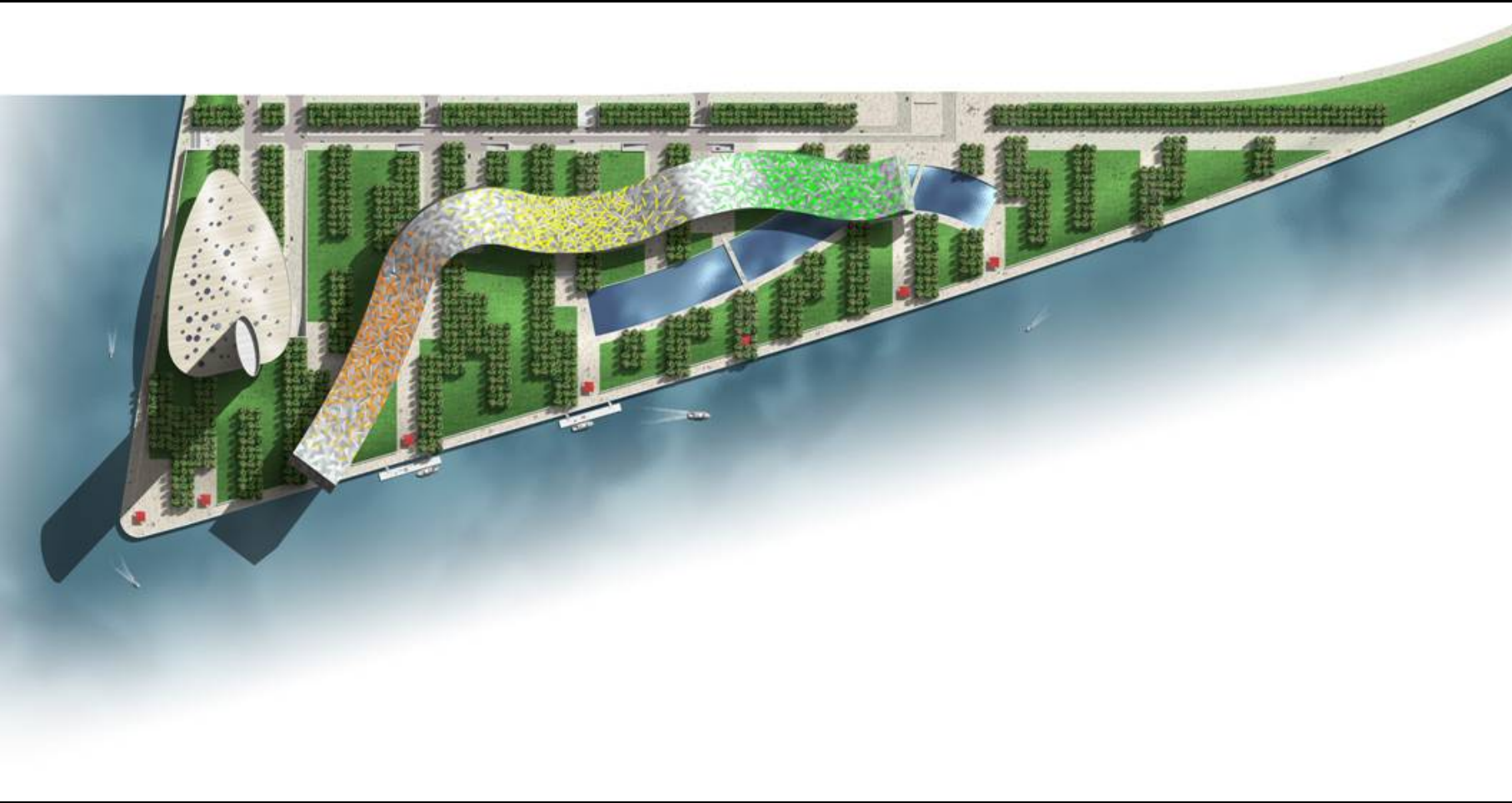


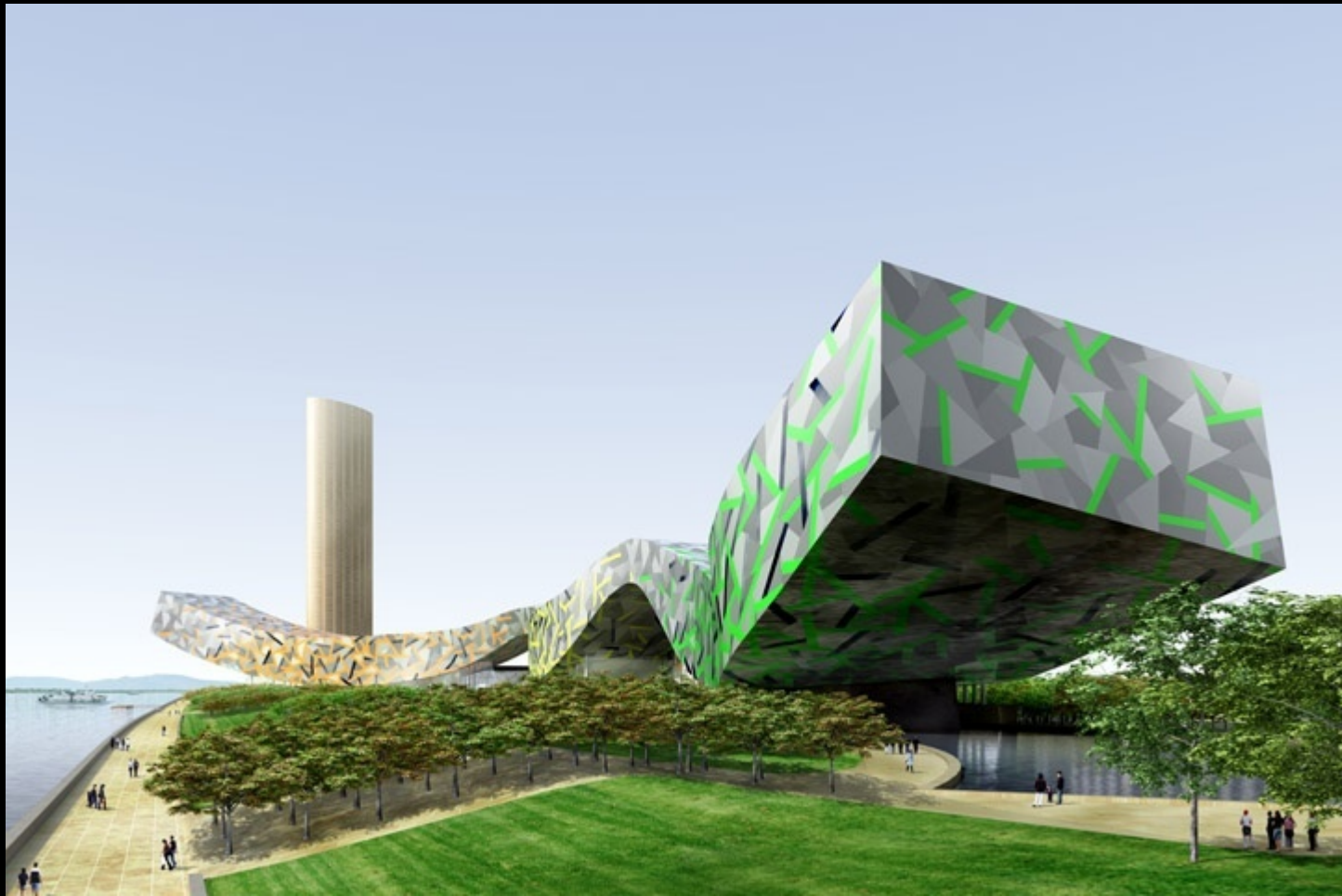
...RIBBONS...



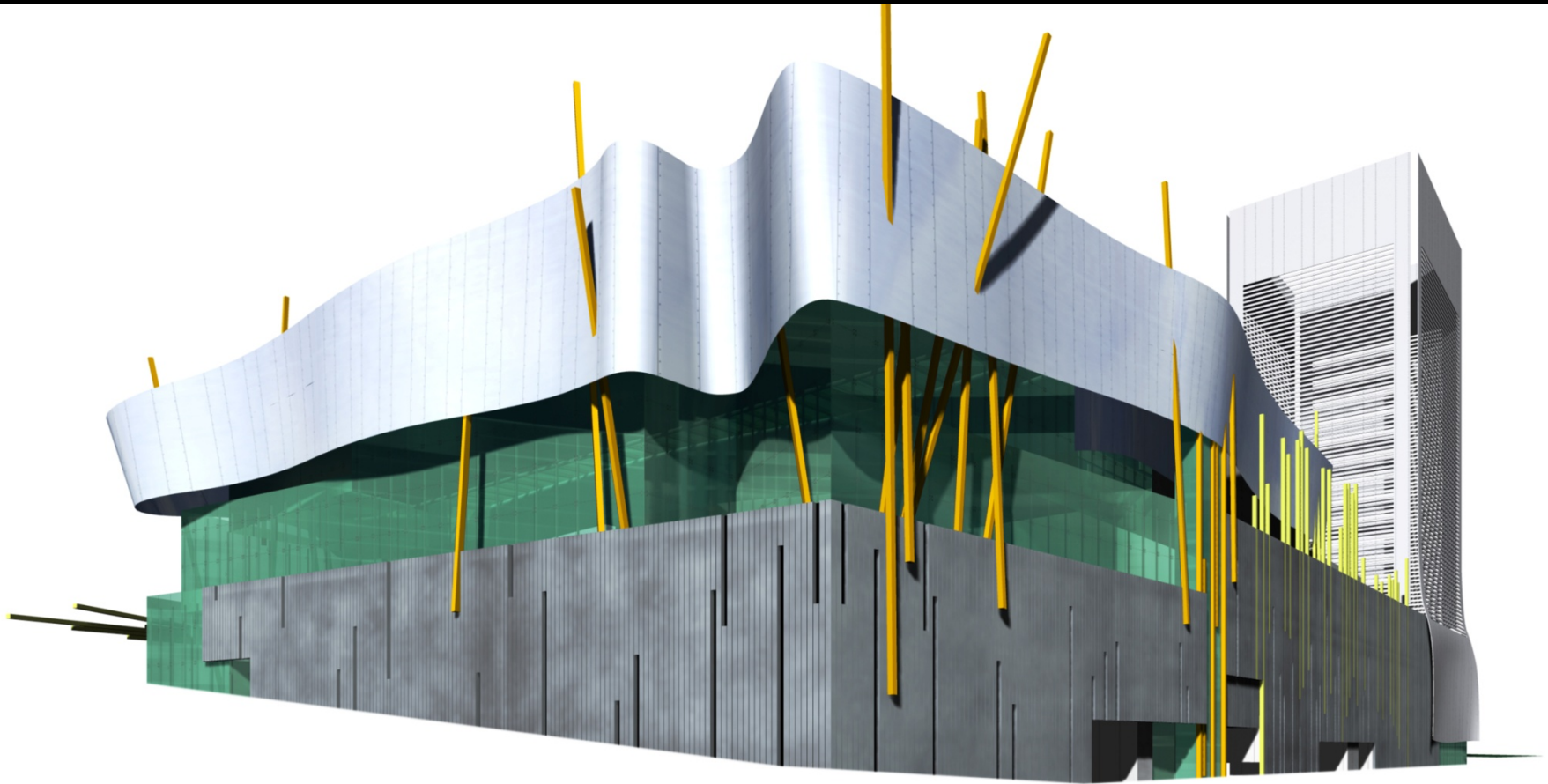






















WE LIKE TO CHALLENGE THE LIMITS OF GRAVITY









WE DELIGHT IN THE POTENTIAL OF COLOUR, PARTICULARLY IN THE SATURATED COLOURS









WE SET ABSTRACT RULES FOR OURSELVES TO PROVIDE ORDER,  
CLARITY AND READABILITY







MELBOURNE MUSEUM





THEN WE ENJOY TRANSGRESSION VIA THE UNEXPECTED OR RANDOM

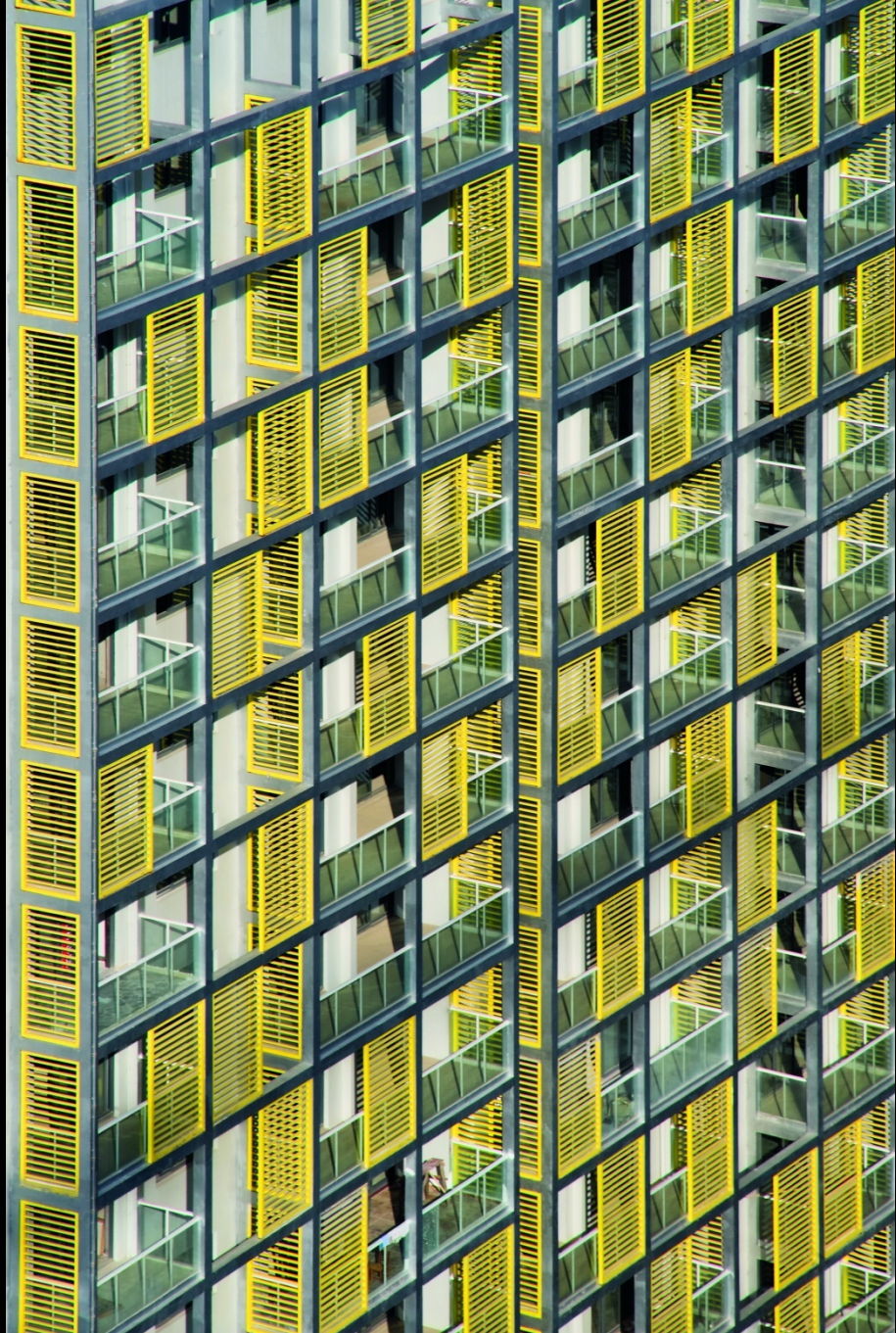




WE PURSUE AS MUCH RANDOMNESS AS OUR DESIRE FOR FUNCTIONALITY  
AND BUILDABILITY WILL PERMIT | PURSUIT OF RANDOM ORDER



















MELBOURNE



SYDNEY



BRISBANE



JAKARTA



BEIJING



SHANGHI



SINGAPORE



MANCHESTER



LONDON



BURMINGHAM

CONTEXT AND CULTURE AS POINTS OF DEPARTURE















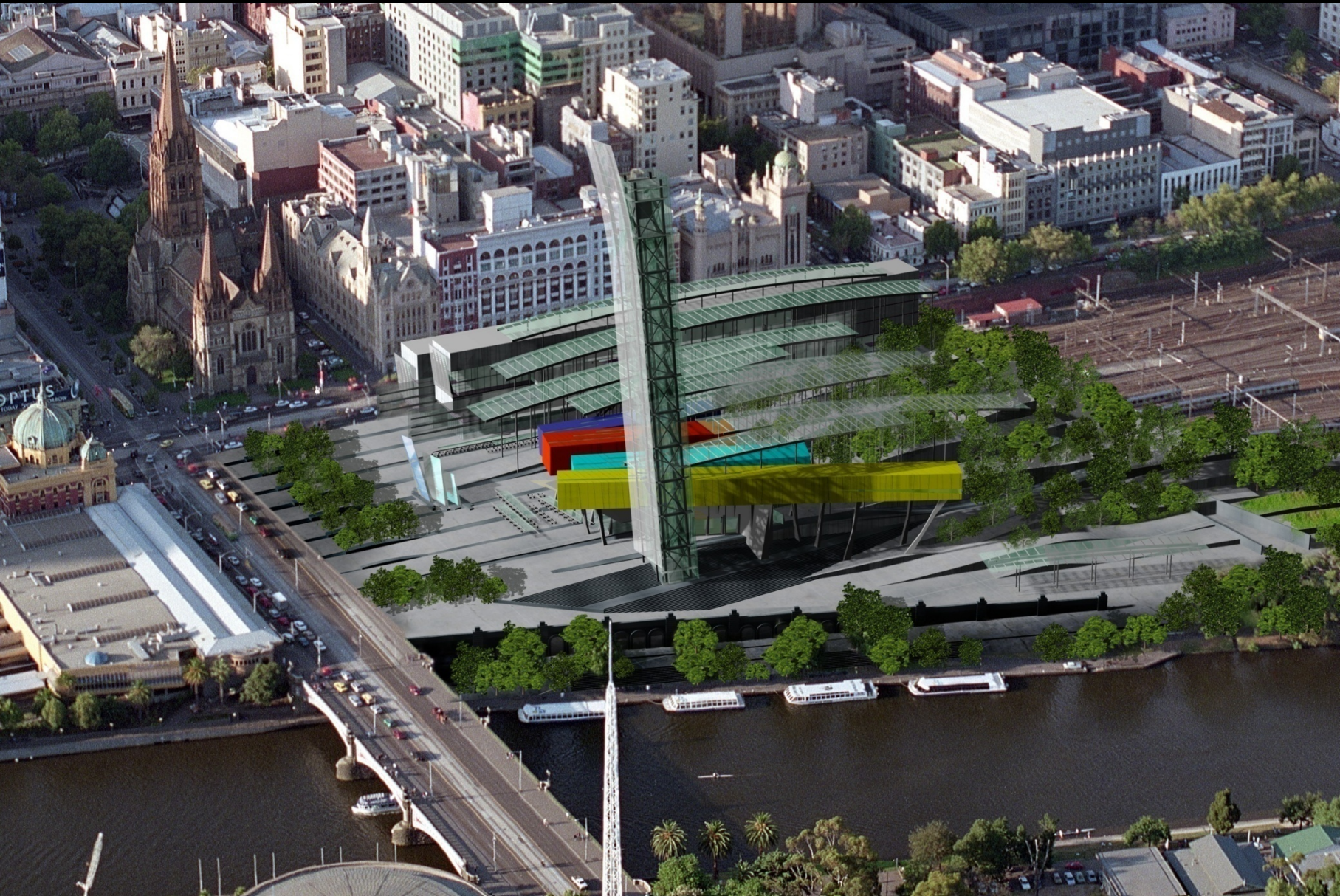








DON'T CONCEIVE ARCHITECTURE AS OBJECTS ON A BLANK PAGE | THEY BELONG TO A PARTICULAR URBAN OR PUBLIC REALM



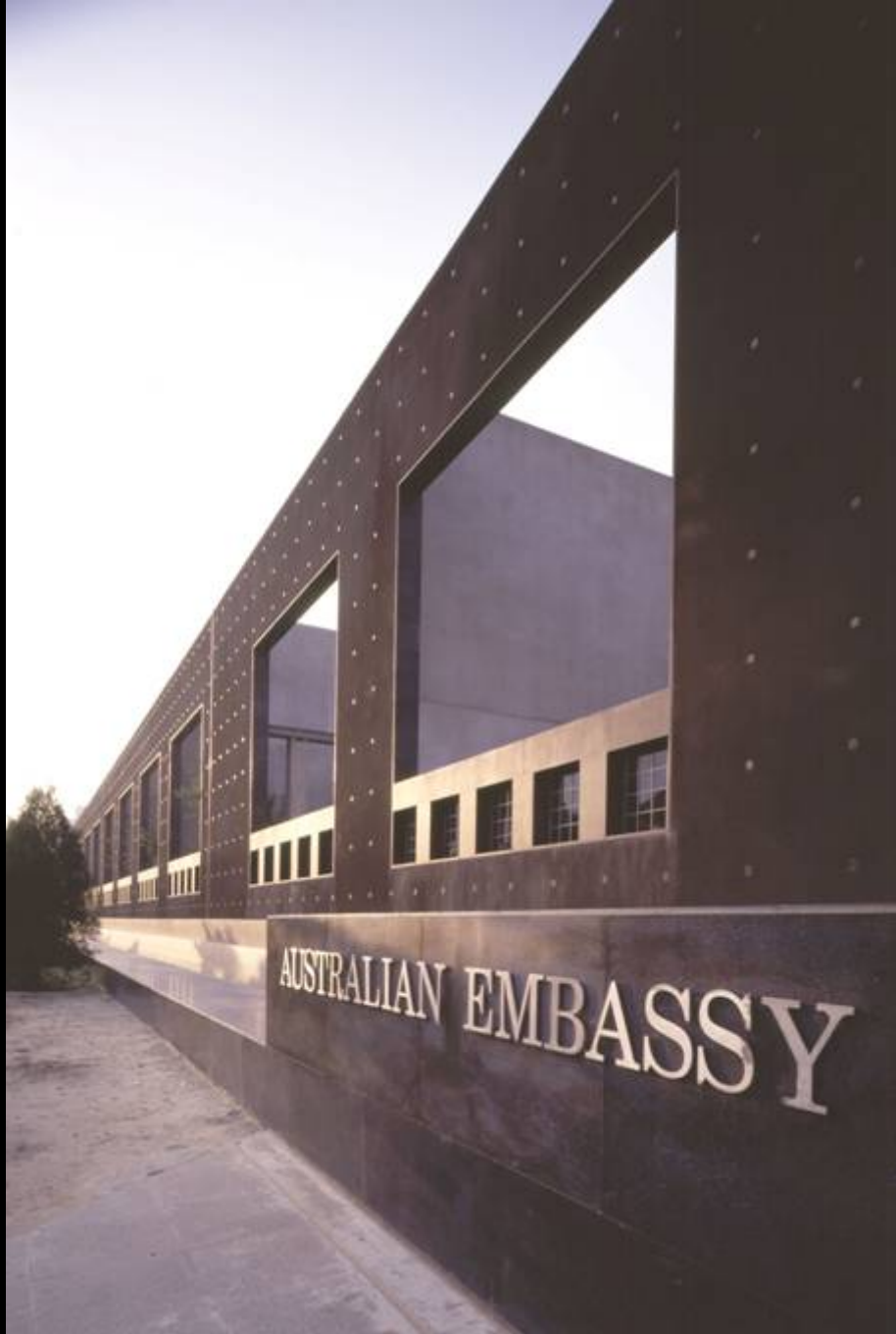
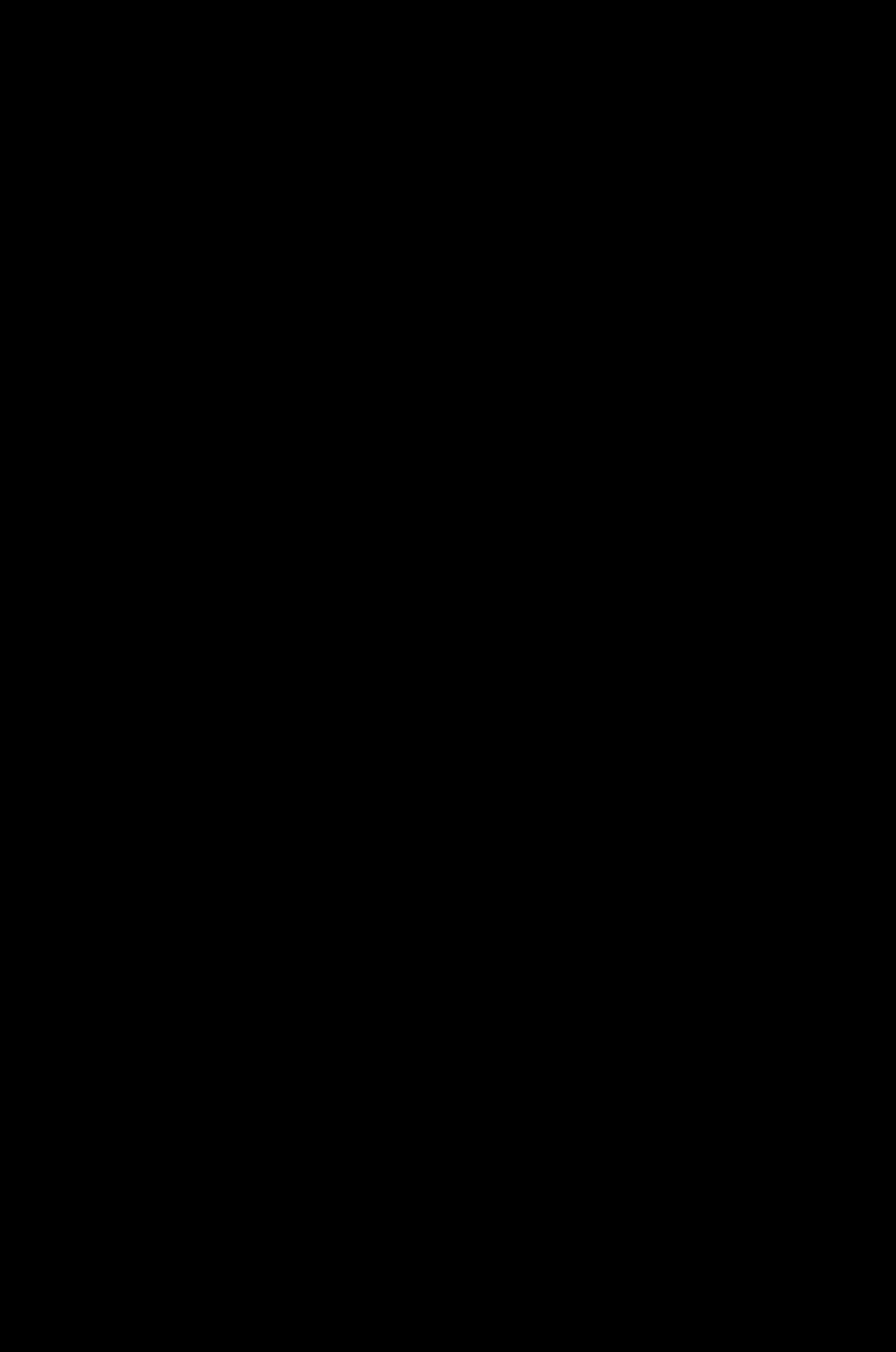










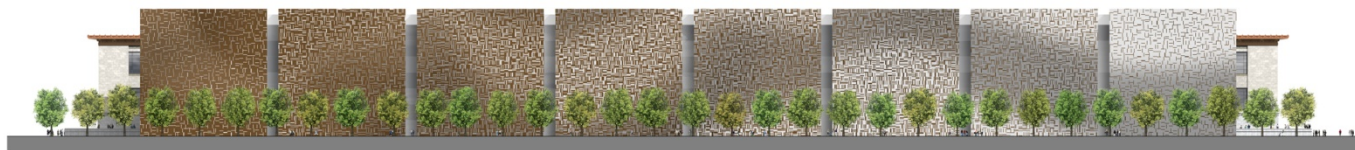




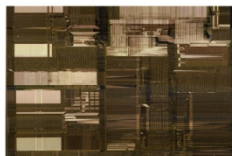
北立面 | North Elevation | 1:500 0 5 10 15M



南立面 | South Elevation | 1:500 0 5 10 15M



东立面 | East Elevation | 1:500 0 5 10 15M



计算机器电路  
Computer Chip Circuitry



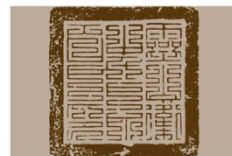
青铜底板和钛合金嵌饰（青铜为主）  
Bronze Baseplate and Titanium Inlay (Bronze is the main material)



毕升活版印刷术  
Bi Sheng's Typography



青底钛饰 / 钛底青饰（青铜与钛合金面积相同）  
Green Base Titanium Inlay / Titanium Base Bronze Inlay (Bronze and Titanium alloy area are the same)



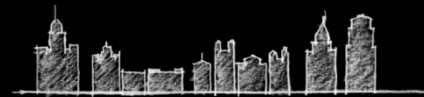
印章  
Ink Seal



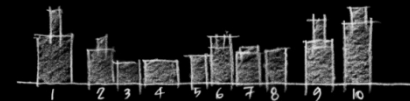
钛合金底板和青铜嵌饰（钛合金为主）  
Titanium Baseplate and Bronze Inlay (Titanium alloy is the main material)



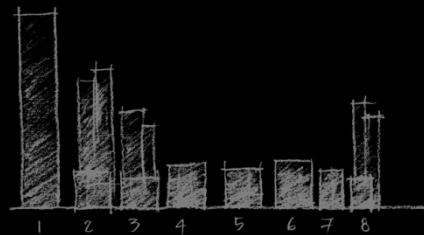




从海关大楼至中国银行的外滩剪影 **Bund silhouette from Customs House to Bank of China**



外滩轮廓线和剪影分析 **Bund simplified outline / silhouette analysis**



8号地块从东门路至古城公园的规划 **Block 8 proposal from Dongmen Road to Gucheng Park**





WE EMBRACE SUSTAINABILITY  
IN OUR WORK

SYDNEY WATER HEADQUARTERS |  
5 STAR GREEN STAR RATING &  
5 STAR AUSTRALIAN BUILDING GREEN RATING





ABOVE ALL WE PURSUE BEAUTY | DEFINED IN OUR TERMS

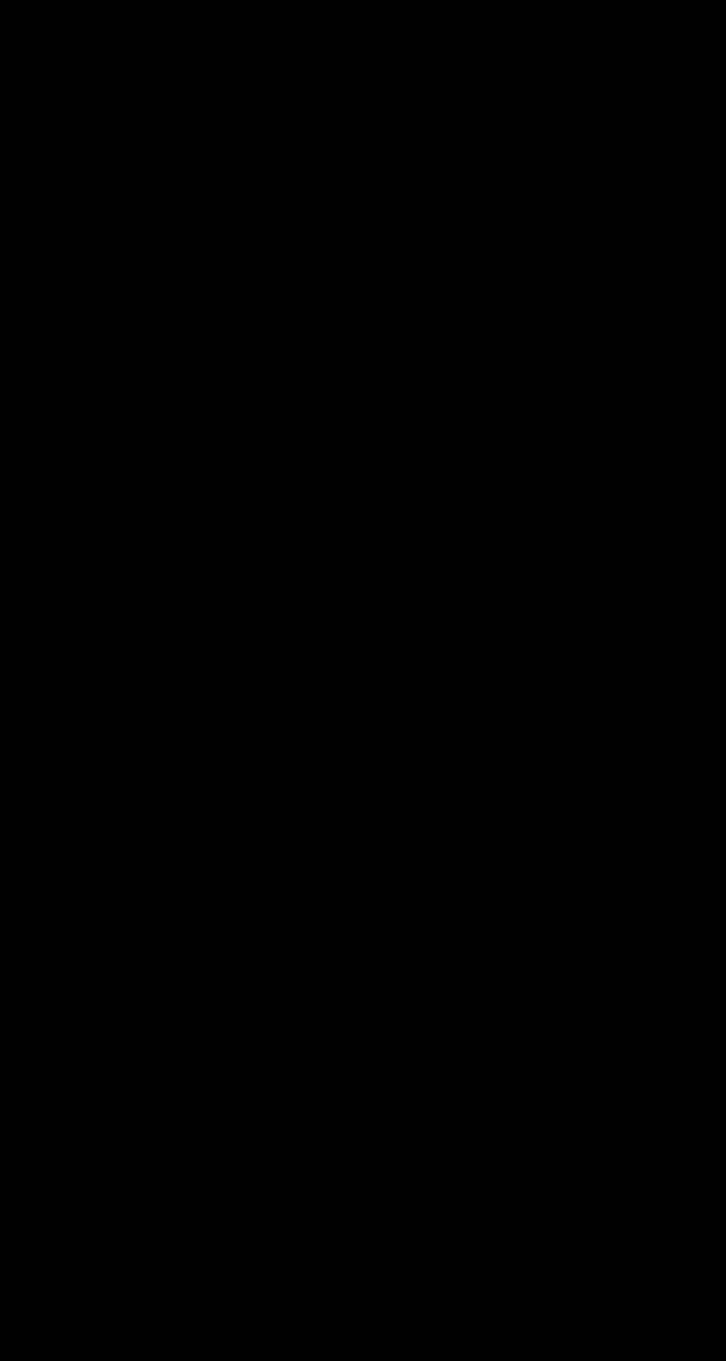


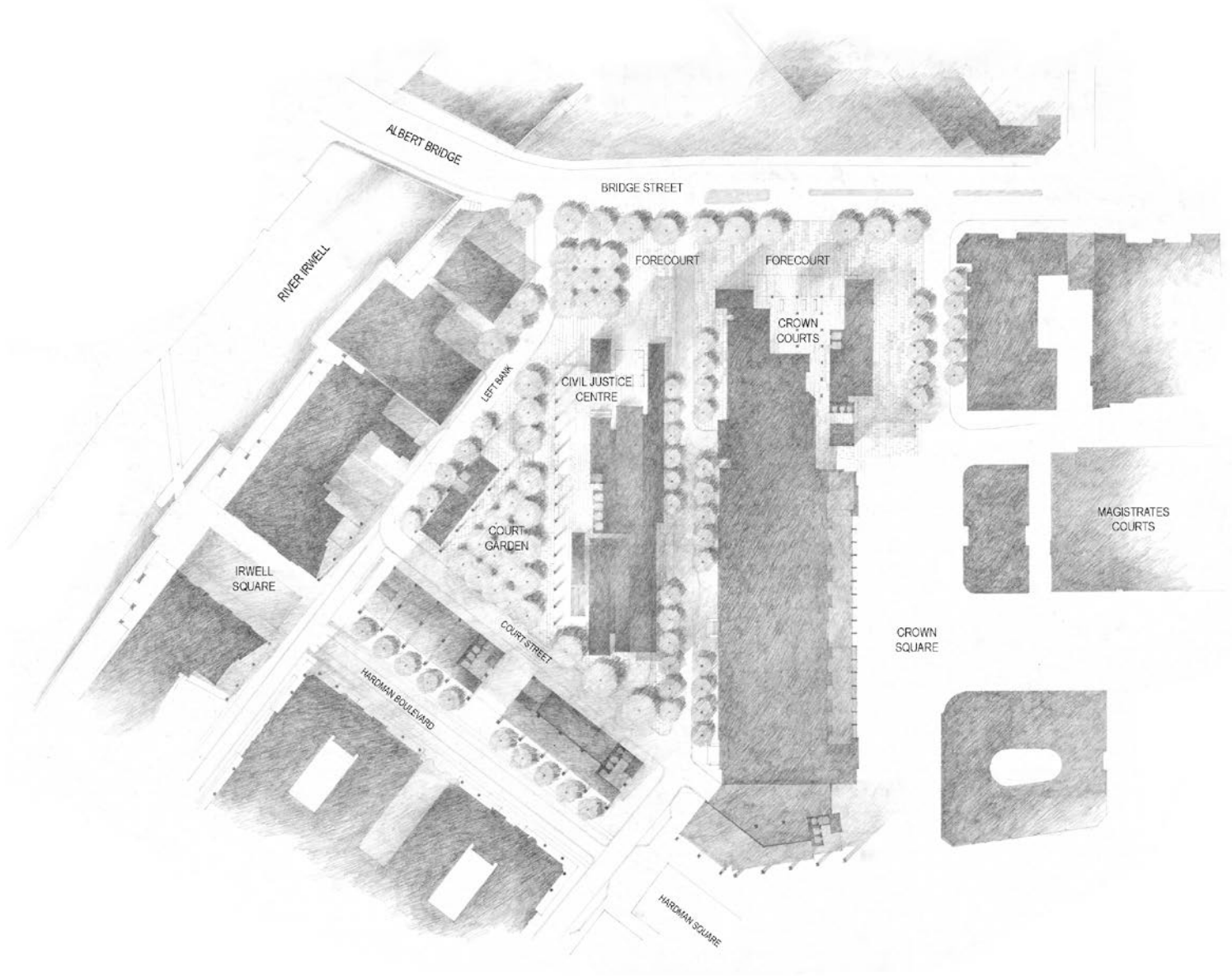
---

**DESIGN TOTALITY**

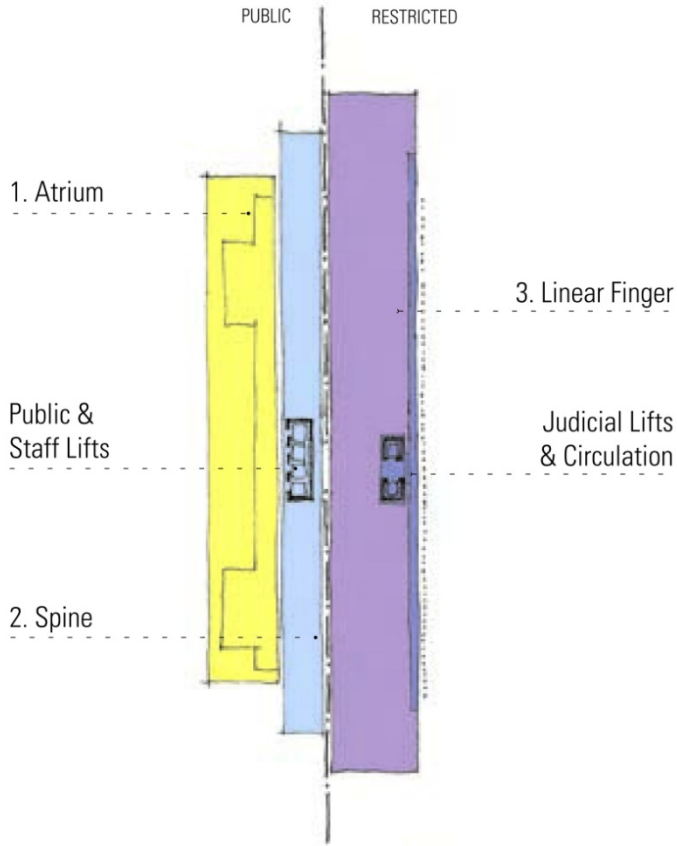
MANCHESTER CIVIL JUSTICE CENTRE  
UNITED KINGDOM



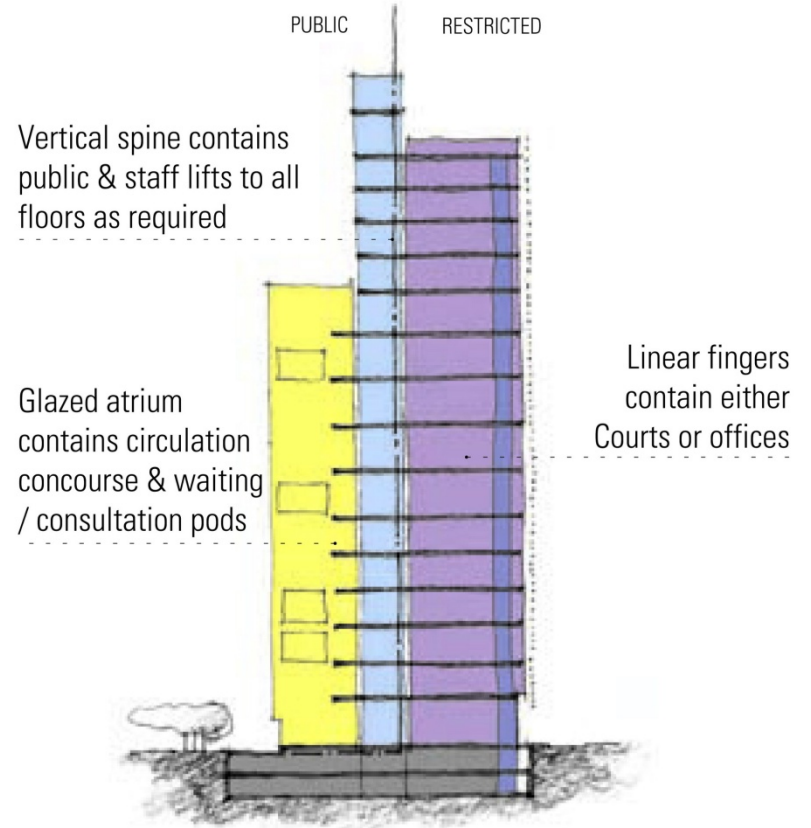








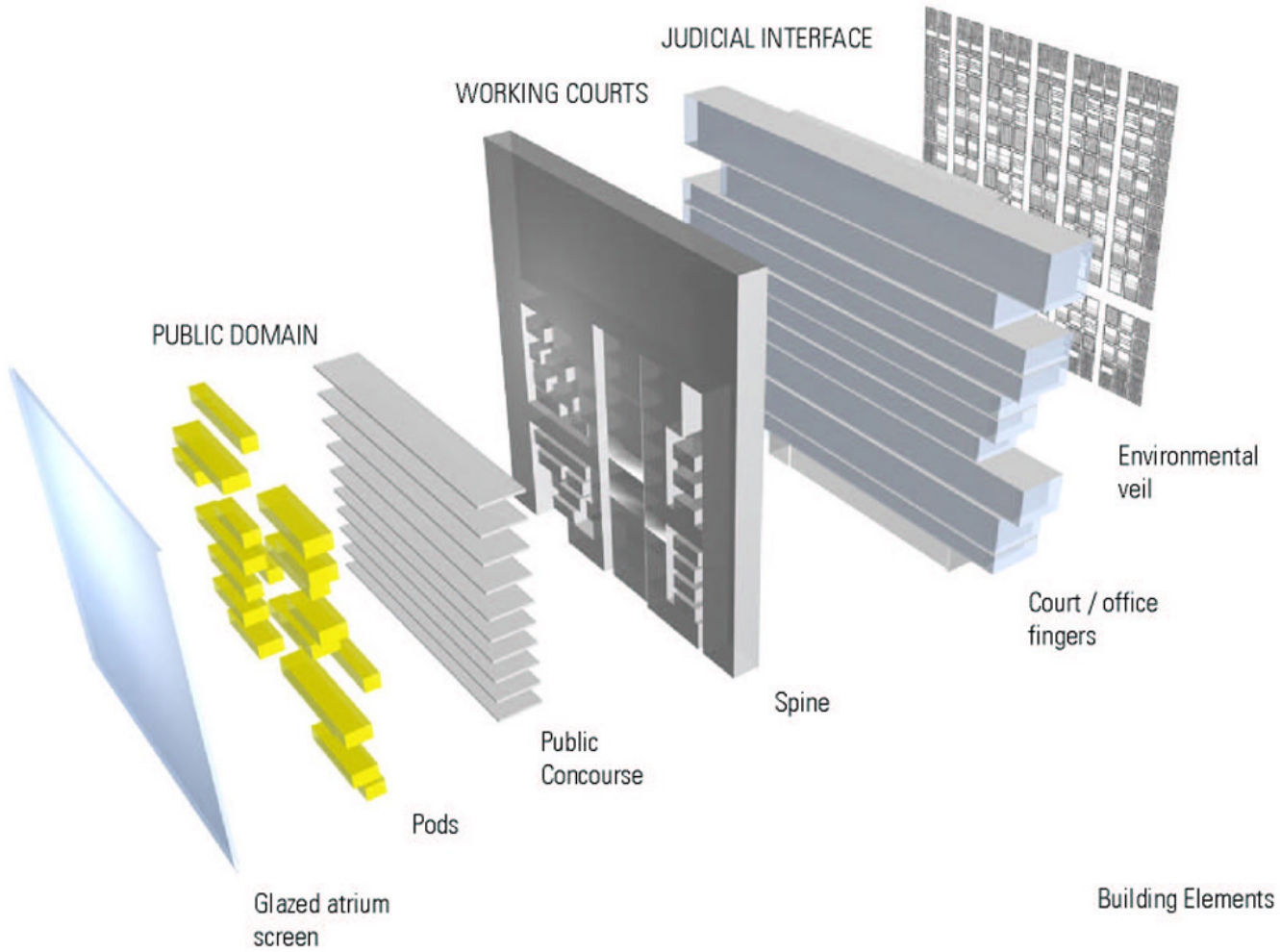
Planning Concept Comprises three primary elements



Primary elements are extruded vertically





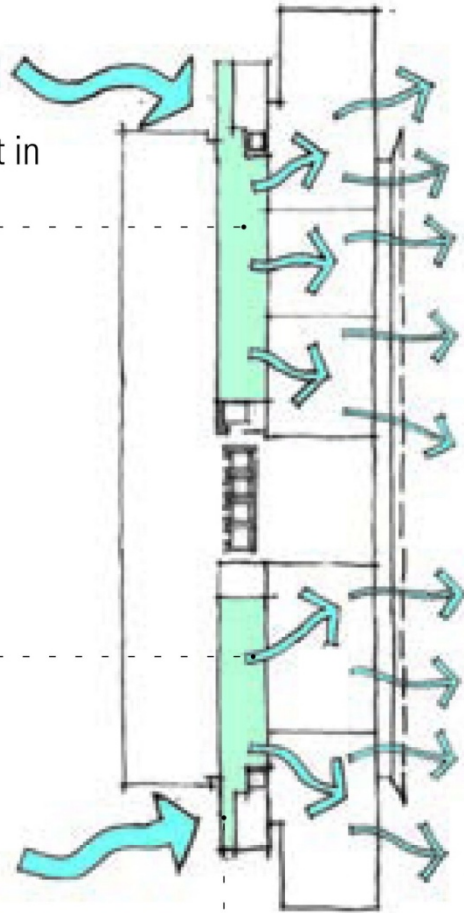


Prevailing westerly winds

Fresh air duct in ceiling

Fresh air supply to courts

Wind scoop in spine wall



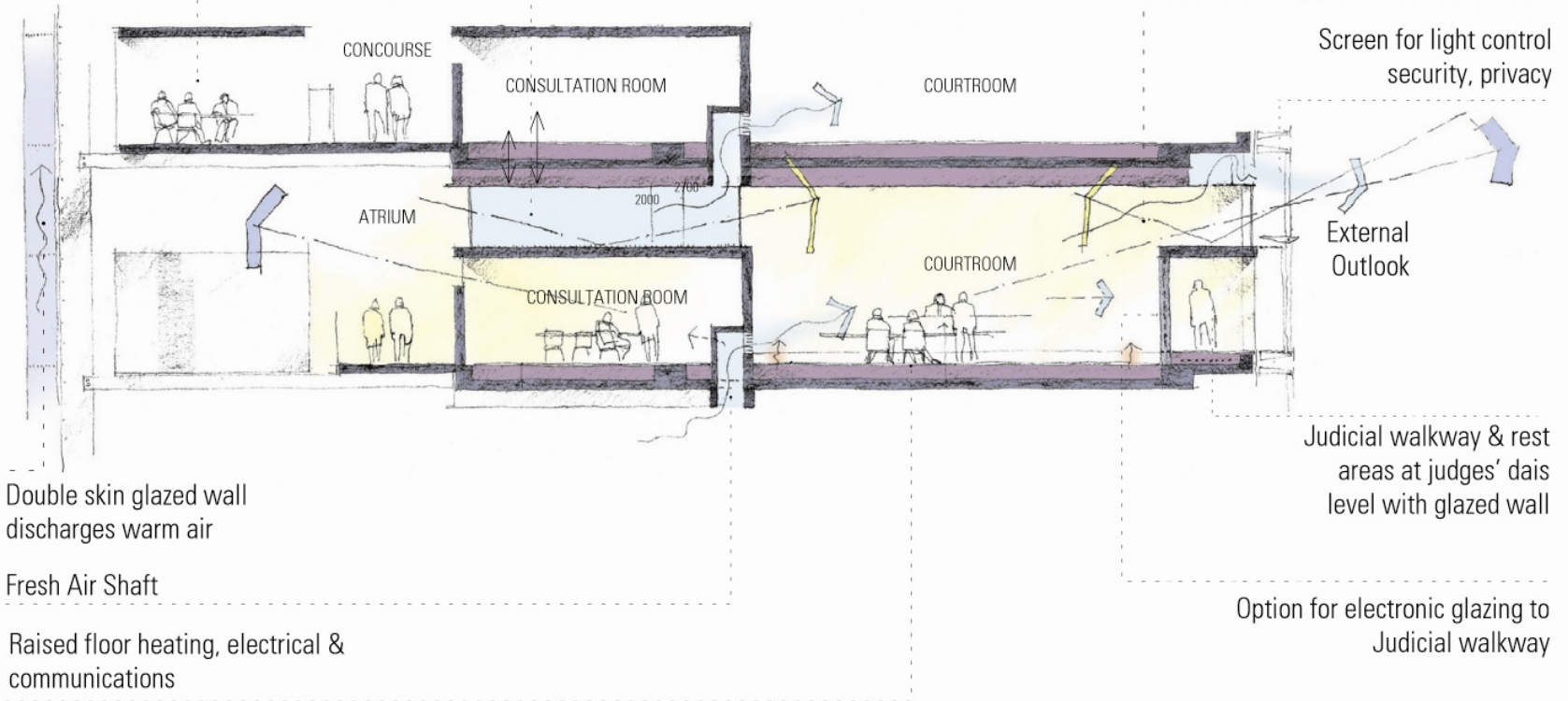
Air exhaust concealed in environmental veil

Natural ventilation system for Courts



Fresh Air Shaft

Consultation or waiting pod in atrium naturally lit



Daylight reflected into courtroom

Screen for light control security, privacy

External Outlook

Judicial walkway & rest areas at judges' dais level with glazed wall

Double skin glazed wall discharges warm air

Fresh Air Shaft

Raised floor heating, electrical & communications

Option for electronic glazing to Judicial walkway





**Manchester Civil Justice | BREEAM rating of Excellent | The highest rating achievable at the time**

**2008 RIBA National Sustainability Award bestowed on ‘the building that demonstrates most elegantly and durably the principles of sustainable architecture’**







**Manchester Civil Justice Centre has won over  
25 Awards including:**

**RIBA National Award**

**RIBA English Partnership Sustainability  
Award**

**The Civic Trust Award**

**The Civic Trust Award for Sustainability**

**AIA National Jorn Utzon Award for  
Outstanding International Architecture**





